



WRJ Midwest District

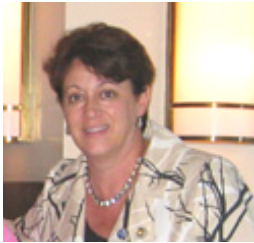


The Messenger

MARLA GOLDBERG, PRESIDENT
PENNY SHNAY, EDITOR

Winter/Spring 5771

MESSAGE FROM THE PRESIDENT



Marla Goldberg

“Trust yourself. Create the kind of self that you will be happy to live with all your life. Make the most of yourself by fanning the tiny, inner sparks of possibility into flames of achievement.” Golda Meir

Shalom Sisters of the wonderful WRJ Midwest District:

Hope this message finds you all well. Every once in a while, the Internet will offer you a gem when you “Google” something: something beyond your expectations. Above is my gem (having searched Golda Meir quotes) to share with you.

When thinking about Jewish women leaders, I could not help thinking about the obvious, Israel’s first woman Prime Minister. Israel, in my mind (and hopefully yours), remains a country ahead of the rest of the world in so very many ways—another quote of Golda’s: “Pessimism is a luxury that a Jew can never allow himself.” So, I will continue to focus on the positives.

One such example is the fabulous WRJ Leadership Conference, held every other year in a different location. Note: the next scheduled one, January 25-27, 2013 is in Cincinnati, Ohio—to kick off our Centennial yearlong celebration. Earlier this month, I was able to join with 10 other Midwest District women, total=168 participants, in San Francisco, for this remarkable event.

It was a tremendous opportunity to immerse ourselves into discovering the work of WRJ, on a large and wide level. Some women seemed to be on the “fast” track for leadership and others slated for the not-so-distant future...all seemed eager and swept up with the energy of dedication, commitment, and discovery.

Overall, the weekend was jam-packed and fairly overwhelming. Shabbat was celebrated and I had the privilege of spending time with our district sisters—getting to know them as well as making myself available for questions and generating ideas and even offering support as we return to our respective sisterhoods to share our developing knowledge.

(continued on page 2)

*Want to feel renewed and get
connected with many sisters?
Come to Kallah—see pages 4 & 5.*



(Marla's Message continued)

Having had the opportunity to participate more actively in the Leadership Conference prior to this one, I felt I had the luxury of some extra moments to synthesize what makes the work of WRJ so important. First, I would have to say that there are some very dynamic individuals that make up our WRJ Officers (including our very own Susan Pittelman—serving as WRJ Recording Secretary, who joined us for part of this weekend, coming in for the WRJ Executive Meeting which immediately followed the Conference) and staff who are ready and more than capable of being accessible and helpful to all who reach out.

In addition, as mentioned earlier, our WRJ organization is about to turn 100 years young and we charge ourselves with the mission statement of “ensuring the future of Reform Judaism.” As the song goes, “Nobody does it better.” In my own words, I see us simply as, “great women, doing great work.”

Take a quick look on the WRJ website, www.wrj.org! If you click onto the Programs tab, you can select Sisterhood Leadership Conference 2011 and read more details and see photos from the weekend. Actually, our very own Cyndi Solitro (Temple Sholom, Chicago, IL) is quoted (see the bottom of this page). Speaking of our very own—I just wanted to take a moment and thank the following women with whom I had the great opportunity to share this event. They, like yourselves, “are worth their weight in gold.”

Thank you ladies for taking and making the time to invest in Leadership Development—for your district, your sisterhoods, and yourselves—we all are beneficiaries of this endeavor called WRJ. And we remain Stronger, Together!

Leadership Conference Attendees: Rozan Anderson (Temple Beth El, Madison, WI), Janet Buckstein (Lakeside Congregation, Highland Park, IL), Jennifer Cramer (B’nai Jehoshua Beth Elohim, Deerfield, IL), Karen Dillon (North Shore Congregation Israel, Glencoe, IL), Diane Fogel (Temple Israel, Minneapolis, MN), Katie Franks (Temple Emanuel, Davenport, IA), Beth Inlander (Temple Sholom, Chicago, IL), Susan Jones (B’nai Jehoshua Beth Elohim, Deerfield, IL), and Betsy Michel (Temple Israel, Minneapolis, MN).

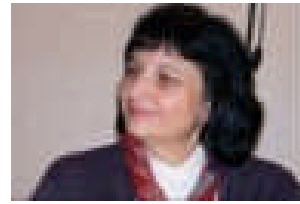
Wishing you the very best on your WRJ journey—AND looking forward to seeing you at Kallah! Flyer/registration form enclosed and also available on our very own website: www.wrjmidwest.org.

In Sisterhood,
Marla Goldberg
WRJ Midwest District President
Temple Beth Israel, Skokie, IL



Cyndi Solitro, Temple Sholom in Chicago, remarked, "For my first WRJ event, I was overwhelmed with the warmth and the immediate connections I made with women from all over North America. The beautiful Shabbat services and informative learning sessions provided me with the confidence, resources, and insight to think about one day becoming our sisterhood president. Thank you to my sisterhood for the invitation to attend this wonderful conference and to the WRJ leadership for coordinating a valuable experience."

Editor's Note: Do you know what makes WRJ Midwest District tick? The following article is the first look at the departments and what they do and who does it. The Department of Service to Sisterhoods will lead off with more to follow.



VP Carol Berger

THE DEPARTMENT OF SERVICE TO SISTERHOODS

Carol Berger (Congregation BJBE, Deerfield, IL) serves as Vice President of this department. Carol moves to this department after serving as Vice President of Development & WRJ Projects and Co-Chair of the 2008 WRJ Midwest District Convention. Her predecessor, Marcy Frost, proudly reports that "our district has a more highly developed Speakers Bureau and AsSist team than most districts."

The Department of Service to Sisterhoods is comprised of the following committees :

ALUMNAE: Lynne Ballesta (Temple Beth El, Madison, WI). Lynne will be sending letters to outgoing sisterhood presidents in our district who do not serve on the WRJ Midwest District Board in any other capacity to invite them to become a Midwest District Alumna. Next year, Lynne will send letters to those officers and chairs who will not be continuing on the board to invite them to become members of our Alumnae Association.

AsSist: Sandi Firsell (Temple Chai,) and Terri Argentar (Congregation BJBE) coordinate our AsSist Team members, which includes our Area Directors as well as some other district leaders. Their vision is to help and encourage sisterhoods in Union of Reform Judaism congregations in our district that are not already affiliated with WRJ to become part of our organization, to help congregations that do not have a sisterhood to start one, to help with retaining sisterhoods, and to provide assistance to sisterhoods in our district in such areas as leadership, membership, nominating, and programming. The Team's most recent success is the affiliation of our newest sisterhood, Congregation Emanu-El of Waukesha, Wisconsin. We were delighted to welcome Sisterhood President Alice Lambie to our Midwest District at our convention in November.

MEMBERSHIP AND OUTREACH: Janet Buckstein (Lakeside Congregation). Janet will be compiling the statistics on membership (both increases and decreases) for the sisterhoods in the district. She will be contacting those in need of assistance as well as congratulating sisterhoods with membership increases.

NOMINATING: Sherri Feuer (Temple Israel). Sherri, the immediate past president of our district, and the nominating committee are charged with creating the slate of officers, area directors, and chairs for our 2012-2014 WRJ Midwest District Board.

SPEAKERS BUREAU: Sue Schneider (Temple Beth Israel). Sue continues in her role of coordinating speakers for Sisterhood Shabbats, meetings, training, Area Days, and more. Each sisterhood is entitled to one speaker each year from WRJ Midwest District, and one speaker every other year from WRJ at no charge. Contact Sue (susanjschneider@comcast.net) to request a Midwest speaker, or Rachel Jurisz at WRJ (RJurisz@wrj.org) to request a WRJ speaker.

WRJ Midwest Kallah

April 1 – 3, 2011

Olin-Sang-Ruby Union Institute, Oconomowoc, WI



Women ★ Spirituality ★ Food What's it all about?



Join Jacqueline Marcus, an award-winning, internationally-recognized registered dietitian and nutritionist who mixes culinary, food, fitness, nutrition, and wellness into recipes for success as we explore our spiritual connections and Jewish memories of food and drink. You might like to visit Jacqueline's website: www.fitfoodpro.com and send Jacqueline any questions or comments about food and spirituality to fitfoodpro@aol.com. *She wants to know what you want to know.* We will also study, with Marilyn Weisberg, about the foods and drinks in Torah and even bring home something to spice up our kitchens and our lives.

Schedule

Arrival	Friday 4:30 p.m.
Closing	Saturday 4:00 p.m.
Bonus	Saturday overnight is free; depart Sunday by noon

Cost

\$100.00 per person (2 people per room)
* Includes Friday dinner, Saturday - 3 meals, Sunday breakfast
\$25.00 extra fee for non-Sisterhood members
\$50.00 surcharge for a single room if available



Please send a recipe to mweisberg0@gmail.com that brings you to a spiritual time or reminds you of a spiritual moment and we will print them to share. Recipes must be received by March 21 to be included.

Any questions: Contact Kallah Co-Chairs

Jacqueline Marcus
847-431-4408
fitfoodpro@aol.com

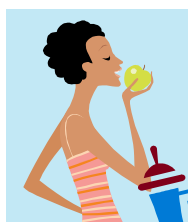
Marilyn Weisberg
952-931-9133
mweisberg0@gmail.com

Reservations are due by **Monday, March 21, 2011. Sorry, no refunds after this date.**
Make check payable to WRJ Midwest District and send with your reservation form to:

Marcia Koester, 5601 Bernard Place, Edina., MN 55436



*Kallah is open to **all** women belonging to Midwest District Reform congregations.*



WRJ Midwest Kallah April 1 – 3, 2011
Olin-Sang-Ruby Union Institute Oconomowoc, WI

Women★Spirituality★Food

What's it all about?



Reservations due by **Monday, March 21, 2011** Sorry, no refunds after this date.

Make check payable to WRJ Midwest District and send with this form to:

Marcia Koester, 5601 Bernard Place, Edina., MN 55436

Name _____

Address _____

City, _____ State _____ Zip _____

Sisterhood or Congregation _____

E-mail (**PRINT CLEARLY**) _____

Phone number _____

Dietary Restrictions _____

Roommate Request _____

Preferred Location (Lodge, Bayit) _____

Special Accommodations _____

(i.e., cannot walk stairs, need a handicap accessible room)

Once registered, you'll receive a confirmation e-mail with additional information.



*Don't forget to send a recipe to mweisberg0@gmail.com that brings you to a spiritual time or reminds you of a spiritual moment and we will print them to share. **Recipes must be received by March 21 to be included.***

I agree that my name, address, phone number and e-mail can be on the registration list and pictures of me may be used in The Messenger (District newsletter) or by WRJ. _____

Some Highlights of Convention

Midwest convened for its convention in Bloomington, Minnesota. We were blessed to have WRJ President Lynn Magid Lazar with us who contributed and shared her many skills when leading workshops on membership, leadership, and more.

Marla and Lynn



Highlights included:

- donating a Torah to OSRUI camp (where most of our district events take place and with whom many members have connections—children or themselves as campers)
- new sisterhood Congregation Emanu-el in Waukesha, Wisconsin receiving its gavel and charter.



Alice Lambie & Sue Center
Emanu-el WRJ Midwest



The charter



The gavel

- wonderful Shabbat worship services (at Temple Israel and our very own Shabbat morning);
- an installation with reception (featuring homemade chocolates made by Temple Beth Israel sisterhood members) for Marla Goldberg.
- a one-woman play “So Kiss me already Hershel Gertz” by Amy Salloway
- Women of Valor and YES Fund luncheons—where many newcomers participated and of course, our business (meetings, plenaries, and a new board orientation) and acknowledging our own Helen Gold and Gloria Miller as Lifetime Members.

We had giraffe awards and heard multiple times from our very own WRJ singers, and probably most importantly, we had a social action project : Kibbitz and Create--making blankets and collecting gloves/scarves for those in need which were donated to the local community. Overall, WRJ Midwest District women had the privilege of discovering that by working together as a district, we create stronger women.



Women of Valor
Luncheon



WRJ Midwest Board



Helen Gold & Gloria Miller
Lifetime Members



Many Dreams One Vision

חלומות רבים, חזון אחד

SAVE
THE
DATE!

Women of Reform Judaism 48th Assembly

December 14-18, 2011

Gaylord National Convention Center (Washington, DC vicinity)

Connect with women who share your interests, concerns, love of Judaism, and the special bonds of sisterhood

Learn from distinguished scholars, authors, and experts

Worship with inspirational spiritual leaders, including celebrating Shabbat with 5,000 other Reform Jews

Participate with the Union for Reform Judaism in joint programming and activities

Women of Reform Judaism
633 3rd Avenue, New York, NY 10017
212-650-4050
info@wrj.org
www.wrj.org/assembly2011



"This was my first WRJ conference and I plan to use a lot of the information I learned in the workshops to further our sisterhood's needs and expectations. I really enjoyed meeting many women from my district and plan to keep in touch with them." —47th assembly participant

"I LOVED IT!! Meeting [the WRJ president] was wonderful. Everybody truly wanted to be there and was so excited and willing to share. I can't wait until next time." —47th assembly participant



Good and Welfare notices now are sent out as part of the monthly Mekasher. This makes them more timely and provides more information.

If you have any joys or sorrows to share with WRJ Midwest District, please send the information to Mae Schwab (maewash@aol.com). Thank you.

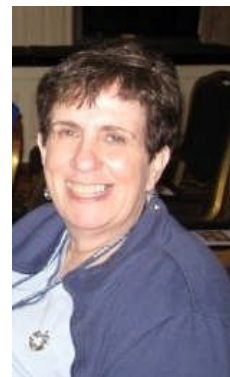
SPEAKERS BUREAU

Hi, my name is Sue Schneider, I am the Chair of Midwest District Speakers Bureau. Many of you know how hard it is to come up with a speaker at each meeting, event or Sisterhood Shabbat. I can help you with this problem. We have many women in our organization that are willing to speak at a Sisterhood Orientation, a Sisterhood Shabbat, a leadership training meeting, or other events on your sisterhood calendar. You are allowed a speaker from Midwest District every year and a speaker from Women of Reform Judaism every other year. All you need to do to get a speaker from Midwest District is to either call me at 847-983-8625 or send me an e-mail: susanjschneider@comcast.net.

You may also want to volunteer as one of the speakers within Midwest District sisterhood, all I need is for you to contact me and I will have the form ready for you to fill out. It is very easy and takes less than five minutes. Please consider this for your calendar. I am compiling speeches, sisterhood orientation scripts and D'Varim that have been presented in the past to aid future speakers with ideas.

Thank you,

Sue Schneider, Speakers Bureau Chair



Dear WRJ leaders,

This is a letter sent to WRJ leaders from Shelly Lindauer who has left WRJ as executive director. Her last day was February 28th. She will be missed.

My seven years as executive director have been very special to me; in partnership with our leaders we were able to bring more value to our sisterhoods by developing new programs and materials, building a WRJ "brand", creating a user-friendly website with WRJ resource materials on the leadership dashboard, and many more projects, publications, and programs too numerous to list.

What I am most proud of is the publication of The Torah: A Women's Commentary, which has already made a huge impact on our community and beyond, and will survive for generations to come.

I thank each and every one of you for your commitment to your local communities and to Women of Reform Judaism. With leaders such as you, I know that WRJ will continue to thrive.

The Midrash says:

"What is a person like? Like someone who goes into a perfume maker's shop. Even though they did not take anything ..., they took out with them a wonderful scent. So, too, anyone who walks with the righteous-takes with them some of their good ways and deeds."

I have walked with all of you for seven years; thank you for the good ways and deeds I will take with me.

If you would like to reach me, my personal email is shelley.lindauer@gmail.com.

With warmest regards and fondest memories,

Shelley



WRJ Midwest Board 2010-2012

Executive Committee

President	Marla Goldberg	Temple Beth Israel	Skokie, IL
First Vice President	Marcy Frost	Temple Israel	Minneapolis, MN
VP Service to Sisterhoods	Carol Berger	BJBE	Deerfield, IL
VP Devl. & WRJ Projects	Esther Schak	Temple Israel	Minneapolis, MN
VP Prog. & Advocacy	Marilyn Oskin	Temple Sholom	Chicago, IL
VP Mark. & Comm.	Ilene Lanin-Kettering	Beth Tikvah Congregation	Hoffman Estates, IL
Corresponding Secretary	Mae Schwab	Temple Chai	Long Grove, IL
Membership Secretary	Joann Hill	Temple Emanuel	Davenport, IA
Recording Secretary	Marcia Bannon	Temple Emanuel	Davenport, IA
Treasurer	Laura Cooper	Temple Beth Israel	Skokie, IL
Immediate Past President	Sherri Feuer	Temple Israel	Minneapolis, MN

Area Directors

Metro Chicago 1	Lynne Turry	Temple Chai	Long Grove, IL
Metro Chicago 2	Julie Newman	Temple Beth-El	Northbrook, IL
Metro Chicago 3	Alese Goers	Beth Tikvah Congregation	Hoffman Estates, IL
S. Sub/NW Ind/Downstate 1	Kristin Stern	Temple Beth-El	Munster, IN
S. Sub/NW Ind/Down 2	Adina Sutlin	Sinai Temple	Michigan City, IN
Wisconsin/W. Illinois 1	Sue Center	Temple Beth El	Madison, WI
Wisconsin/W. Illinois 2	Jodi Oskin Harris	Temple Beth El	Madison, WI
MN/ND/SD 1	Harriet Krasnoff	Beth Shalom Congregation	Minnetonka, MN
MN/ND/SD 2	Sue Stein	Mount Zion Temple	St. Paul, MN
IA/NE	Marlen Frost	Temple Israel	Omaha, NE

Chairs

Alumnae	Lynne Ballesta	Temple Beth El	Madison, WI
AsSIS	Sandi Firsell	Temple Chai	Long Grove, IL
	Terri Argentar	BJBE	Deerfield, IL
Membership & Outreach	Janet Buckstein	Lakeside Congregation	Highland Park, IL
Nominating	Sherri Feuer	Temple Israel	Minneapolis, MN
Speakers Bureau	Sue Schneider	Temple Beth Israel	Skokie, IL
Camp	Michelle Scheinkopf	North Shore Cong. Israel	Glencoe, IL
	Peggy Rubenstein	North Shore Cong. Israel	Glencoe, IL
Lifeline/Circle/YES Fund	Helen Gold	Temple Beth-El	Munster, IN
	Adrienne Daskal	BJBE	Deerfield, IL
WRJ Projects	Dolly DeCaro	BJBE	Deerfield, IL
Bylaws Revisions	Susan Pittelman	Congregation Shalom	Milwaukee, WI
Data Management/Directory	Linn Ullenbrauck	Temple Beth Israel	Skokie, IL
Historian	Peggy Kipp	Mount Zion Temple	St. Paul, MN
The Messenger	Penny Shnay	BYBS	Homewood, IL
Website	Gayle Hachen	Temple Beth-El	South Bend, IN
Critical Issues/Social Action	Julia Ziev	Temple Anshe Sholom	Olympia Fields, IL
Kallah	Jacqueline Marcus	North Shore Cong. Israel	Glencoe, IL
	Marilyn Weisberg	Temple Israel	Minneapolis, MN
Programming	Marsha Cooper	Oak Park Temple	Oak Park, IL
Religious Rituals/Worship	Diane Frichol	Mt. Zion Temple	St. Paul, MN
Rhoda Hauptman	Sheila Schuman	Mount Zion Temple	St. Paul, MN
	Liz Mack	Temple Israel	Minneapolis, MN
Youth	Naomi Shapiro	Beth Shalom Congregation	Minnetonka, MN

WRJ Midwest District

Check us out at www.wrjmidwest.org. There you will find out up-to-date information, calendar, ideas for your sisterhood, useful links to other sites, photos, messages from our president and WRJ, and much more.

Editors Note: If you want to receive a hard copy, please e-mail plshnay@sbcglobal.net



WRJ — Stronger Together



DATES TO REMEMBER

April 1-3, 2011

**WRJ Midwest District Kallah—OSRUI
Executive Committee Meeting—OSRUI, April 1**

May 21-23, 2011

WRJ Board Meeting, New York City

September 16-18, 2011

**WRJ Midwest Interim Board Meeting and Leadership Retreat—OSRUI
Executive Committee, OSRUI, September 16**

December 14-18, 2011

WRJ 48th Assembly, Washington, DC

April 27-29, 2012

**WRJ Midwest District Kallah—OSRUI
Executive Committee Meeting—OSRUI, April 27**